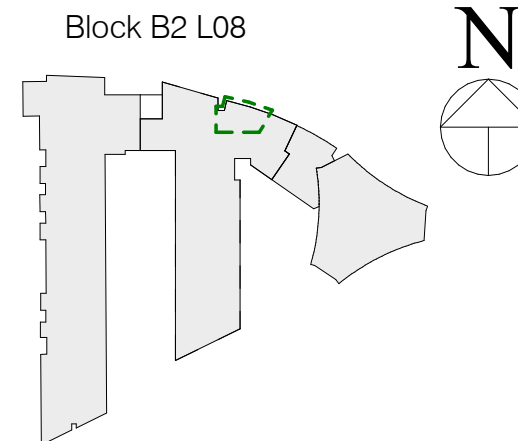


2 Bed (3P)

- Apartment Area 69.2sq.m (63sq.m minimum required)
- Aggregate Living/Dining/Kitchen area 32.9sq.m (28sq.m minimum but variation of up to 5% can be applied to room areas subject to overall compliance with required minimum overall apartment floor area)
- Storage Area 4.9sq.m (5sq.m minimum required)

L08 - Apartment Type G
1 : 50



Notes:

- Do not scale from this drawing. Use figured dimensions in all cases.
- Verify dimensions on site and report any discrepancies to the Architect immediately.
- This drawing to be read in conjunction with the Architect's Specification.
- © This drawing is copyright and may only be reproduced with the Architect's permission.

P01	20.03.2026	RAU	Issued for Planning
Rev.	Date	Drwn	Details of Issue / Revision

Issues & Revisions



Dartry Mills,
Dartry Road
Dublin 6,
D06 Y0E3
T: +353 (0)1 498 7000
W: www.reddyarchitecture.com
E: info@reddyarchitecture.com

Client Details:

Ruiside Developments Ltd

Project Details:

**Parkgate St
42a Parkgate St, Dublin 8**

Drawing Title:

Application 01 - Proposed Apartment type G

Job No. P24-216D	Sheet Size: A3_Landscape	Scale @A3 As indicated
----------------------------	------------------------------------	----------------------------------

Issue Date: 20.03.2026	Drawn By: RAU	Reviewed By: PK
----------------------------------	-------------------------	---------------------------

Status S0	Purpose of Issue Planning Permission
---------------------	--

Project - System - Spatial Zone - Level - Type - Originator - Role - Number	Revision
---	----------

PGS-02-SW-ZZZ-DR-RAU-AR-5007	P01
-------------------------------------	------------